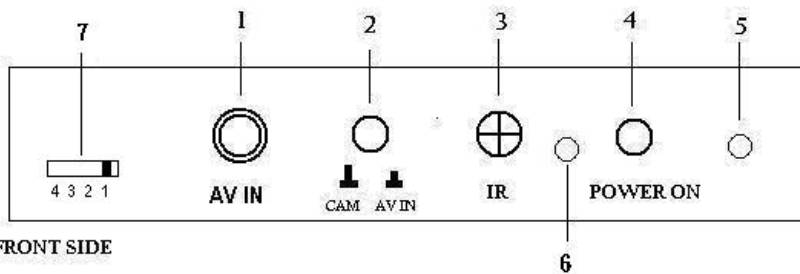


## \* DRMUSB CONTROL BOX

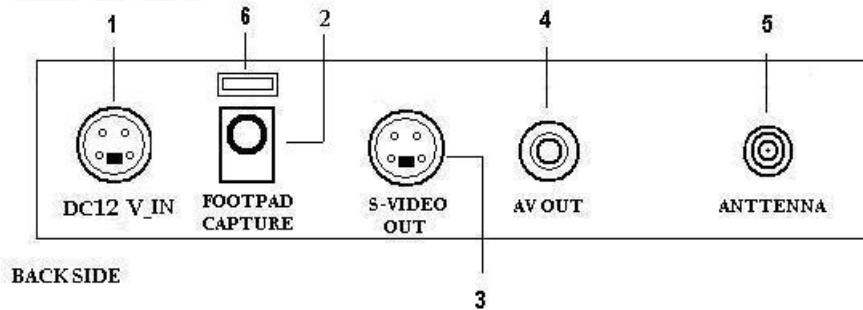
### DRMUSB RECEIVER



### DESCRIPTION :

- 1 CONNECTOR FOR INPUT COMPOSITE VIDEO SIGNAL
- 2 BUTTON TO SWITCH BETWEEN INTRAORAL CAMERA MODE ( CAM ) AND OTHER COMPOSITE VIDEO INPUT MODE ( WIRED DHP INTRAORAL CAMERA)
- 3 THE RECEIVER OF INFRARED REMOTE CONTROL
- 4 POWER BUTTON TO ACTIVATE DRM RECEIVER UNIT
- 5 LED INDICATOR FOR POWER ACTIVATION  
WHEN POWER BUTTON PRESSED,LED INDICATOR WILL LIGHT
- 6 LED INDICATOR FOR USB ACTIVATION
- 7 CHANNEL SELECTION

### DRMUSB RECEIVER



### DESCRIPTION :

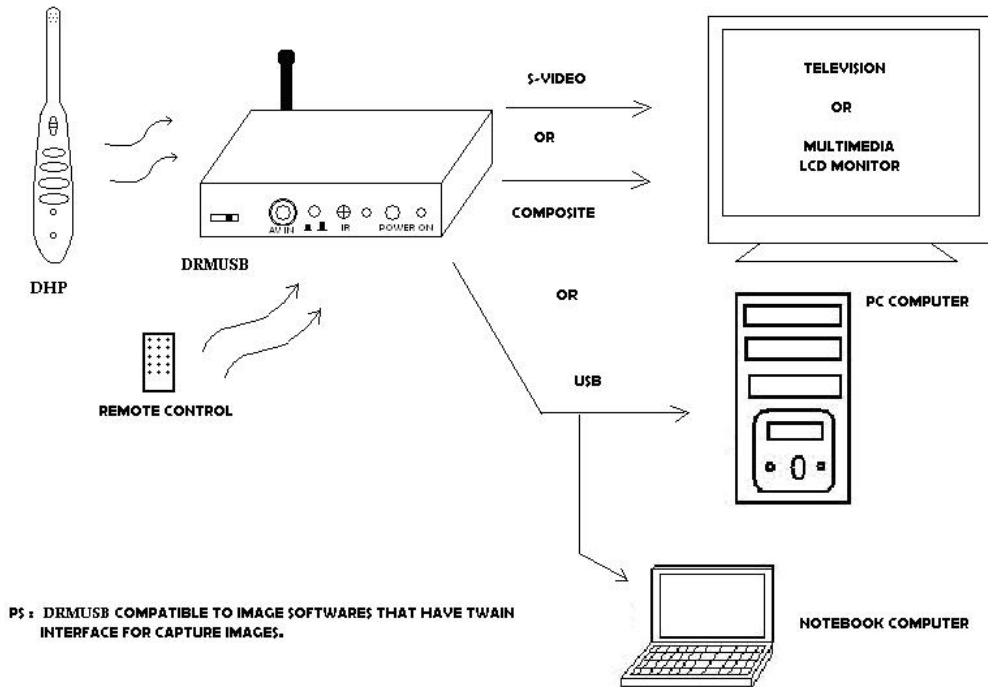
- 1 DC JACK FOR 12 V POWER ADAPTER CONNECTION
- 2 JACK FOR FOOTPAD CONTROL CONNECTION
- 3 CONNECTOR FOR S-VIDEO OUTPUT SIGNAL
- 4 CONNECTOR FOR AV/COMPOSITE OUTPUT SIGNAL
- 5 CONNECTOR FOR WIRELESS ANTENNA RECEIVER
- 6 USB CONNECTOR

## \* REMOTE CONTROL



- /田** : button for select full page image or quad images.
- Freeze** : button for capturing images ( same function with footpad capture or capture button on handpiece).
- Recall** : button for recalling the captured images. After pressing this button, the screen will appear previous captured images start from page 1.
- Up & Down** : after pressed recall button, press up or down button to get the expected image and press the recall button once again to get the live image.
- DELETE** : Button for delete images.
- NEG** : Negatoscope function. Press this button the LCD screen turn to negatoscope screen and user can use it to view large X-Ray film. Press once again it will return to intraoral camera mode.
- IS** : Image Stabilizer function. After taking intraoral image then press this button, image vibration will be reduced. It also can use to reduce vibration when we "recall" the stored images.
- BW** : Turn the images into black and white mode.
- BRIGHTNESS** : Adjust the brightness of images
- Color** : Adjust the color of images.

## a. PRODUCT INSTALLATION



- \* Refer to picture above, user can make choice whether use composite,S-Video or USB to install DRMUSB ( wireless control box ).
- \* For installing USB driver, user can follow the manual inside the USB Driver CD.
- \* USB Driver for DRMUSB is compatible to image softwares that have TWAIN interface for preview and capture images.

## V. FAQ

- \* Q : Why after pressed the power button,LED power indicator of unit doesn't light?  
A : Please check whether the adaptor cable is connect properly.
  
- \* Q : Why the image didn't appear on screen.  
A : - Please check whether the output of DRMUSB connect properly to the screen.  
- Be sure that DRMUSB is in CAM mode not AV in mode.  
- The handpiece camera must be in "Intraoral" mode for intraoral purpose.
  
- \* Q : Why the remote control didn't act properly?  
A : Please check the battery of remote control.
  
- \* Q : Why in the quad type ,the image cannot memorized.  
A : All the quad frame must be filled and then press the capture button once again to save them into memory.
  
- \* Q : Why a lot of interference exist on the screen ?  
A : - Please adjust the position of antenna receiver for DRMUSB.  
- Do not use two DHP simultaneously in very short distance .  
- Please turn off and turn on again DRMUSB.